



Customized products according to your requirements • Factory direct supply


# FUNERAL WOODEN COFFIN

SOLID WOOD COFFIN  
WITH KINDS OF DIMENSIONS,  
EUROPE STYLE

High quality wood



## PRODUCT FEATURES

Coffins of various materials 

## ADVANCED PRODUCTION EQUIPMENT AND PRODUCTION PROCESS

### PROFESSIONAL



20<sup>+</sup>

#### 20+ YEARS

More than 20 years of export experience in the industry. You can safely choose a coffin to protect your loved ones.



#### HIGH QUALITY

We select high quality solid wood materials to ensure the high quality and durability of the coffins and stand the test of time.



#### HAND-CRAFTED

Each coffin is hand-crafted by skilled artisans with attention to detail and aesthetic design. Whether it is simple style or traditional style, it shows elegance and dignity.



#### ENVIRONMENTAL PROTECTION

As a socially responsible company, we are concerned about environmental protection and committed to sustainable development. All materials used are sourced from legal sources and comply with environmentally friendly standards.



#### INTERNATIONAL STANDARD

We strictly follow international standards and take a number of measures in the production process to ensure that products meet safety requirements.



#### SUPPORT CUSTOMIZATION

In order to meet the special needs of funeral ceremonies under different cultural backgrounds and religious beliefs, we provide personalized customized services.

# Dongming Sanxin Wood #

# COMPANY INTRODUCTION



## operating since 2006

Dongming Sanxin Wood Industry Co. Ltd was established 2006. We cover about 30, 000 square meters and employ 100 personnel. Our main products are paulownia edge glued boards, paulownia finger joint boards, poplar panel, pine wood and plywood, which are very good for furniture, snowboarding and surfboarding, coffins and more. Located in Pengzhuang Industrial Park, Datun Town, Dongming Country, Heze City, Shandong Province, China, we are only 200 kilometers from Zhengzhou Airport.

## exporting products worldwide

Since our factory is located in the paulownia wood processing base of China, we have rich resources and various dimensions for your choice. We have been exporting products to Southeast Asia, Europe, the US, Japan, the Middle East, Latin America, Africa and other areas, since our establishment. All these make us win a good reputation among the customers both in China and abroad.

## CONTACT US TODAY

Our principle is "serve the world, keep environment green", we only use glue that is environment-friendly and with good and high quality. Aiming to achieve mutual benefits with clients all over the world, we are looking forward to cooperating together with you for a better and more beautiful green world. If you are interested in our products, contact us now.



# Dongming Sanxin Wood #

# PRODUCT SHOWCASE



# Dongming Sanxin Wood #

# HOT PRODUCTS



# Dongming Sanxin Wood #

## DETAILED SHOWCASE



### 5 COATS OF VARNISH FOR A SMOOTHER FINISH 01



Improve the durability and waterproofness of the casket

EXCELLENT QUALITY



### ENVIRONMENTALLY FRIENDLY WHITE LATEX, SUFFICIENT AMOUNT 02



Water and weather resistance are also very good, able to maintain stable performance in different environments, prolonging the service life.

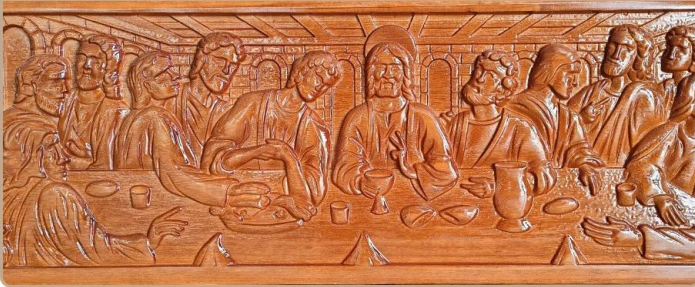


### FINE ENGRAVING WITH RICH PATTERNS 03



The coffins were carved with delicate patterns, smooth and fine

EXCELLENT QUALITY



### QUALITY HARDWARE FITTINGS 04



Features durability, anti-corrosion and aesthetics

EXCELLENT QUALITY



# Dongming Sanxin Wood #

# PRODUCTION PROCESS



**SANXIN**

Strict quality control

## FAQ



**Q** Are you a trader or factory?

**A** We are a more than 20 years exported experiences professional factory.

**Q** Can I get some free samples?

**A** Samples are available if necessary.

**Q** What is the production lead time for the full order ?

**A** It takes about 15 to 25 days for regular specifications, about 30 days for customized specifications.

**Q** What kind of payment do you accept ?

**A** T/T, L/C, Western Union

**Q** How to ship the goods?

**A** Usually by sea or train.



<b>Articolo</b>	Cina produce prezzi economici cofanetti in legno massiccio e bare forniture funebri per i morti
<b>spessore</b>	25 mm
<b>Colore</b>	come vedi o di cui hai bisogno
<b>Applicazione</b>	Servizio funebre
<b>MOQ</b>	140
<b>Campioni</b>	Gratuito, è possibile inviare 1-2 giorni
Pagamento	TT, LC...Western Union
Giorno di consegna	25-30 giorni